



Catalog Number GTX104698 **Package:** 25 µl, 100 µl

[Reference](#) (4)

Product Name Cyclophilin A antibody [C1C3]

Full Name peptidylprolyl isomerase A (cyclophilin A)

Synonyms CYPA antibody, CYPH antibody, MGC117158 antibody, MGC12404 antibody, MGC23397 antibody, PPIA antibody, cyclophilin antibody, PPlase A antibody, rotamase A antibody, peptidyl-prolyl cis-trans isomerase A antibody, cyclosporin A-binding protein antibody, T cell cyclophilin antibody, peptidylprolyl isomerase A (cyclophilin A) antibody

Product Description Rabbit Polyclonal antibody to Cyclophilin A (peptidylprolyl isomerase A (cyclophilin A))

Background This gene encodes a member of the peptidyl-prolyl cis-trans isomerase (PPlase) family. PPlases catalyze the cis-trans isomerization of proline imidic peptide bonds in oligopeptides and accelerate the folding of proteins. The encoded protein is a cyclosporin binding-protein and may play a role in cyclosporin A-mediated immunosuppression. The protein can also interact with several HIV proteins, including p55 gag, Vpr, and capsid protein, and has been shown to be necessary for the formation of infectious HIV virions. Multiple pseudogenes that map to different chromosomes have been reported. [provided by RefSeq]

Host Rabbit

Clonality Polyclonal

Isotype IgG

Immunogen Carrier-protein conjugated synthetic peptide encompassing a sequence within the C-terminus region of human Cyclophilin A. The exact sequence is proprietary.

Antigen Species Human

Species Reactivity Human

Predicted Cross Reactivity species Mouse, Rat, Cat, Pig, Sheep, Rhesus Monkey

Predict Reactivity Note Mouse (100%), Rat (100%), Cat (100%), Pig (100%), Sheep (100%), Rhesus Monkey (100%)

Applications ICC/IF, IHC-P, WB

Application Note	Suggested dilution	Reference
Immunocytochemistry/ Immunofluorescence	1:100-1:1000*	
IHC (Formalin-fixed paraffin-embedded sections)	1:100-1:1000*	
Western blot	1:1000-1:10000*	

Not tested in other applications.

*Optimal dilutions/concentrations should be determined by the researcher.

Positive Controls H1299 , HeLaS3 , Raji WCE , Raji C+M , Raji NE

Predicted Target Size 18 kDa

Conjugation Unconjugated

Form Supplied Liquid

Purification Purified by antigen-affinity chromatography.

Concentration 1 mg/ml (Please refer to the vial label for the specific concentration)

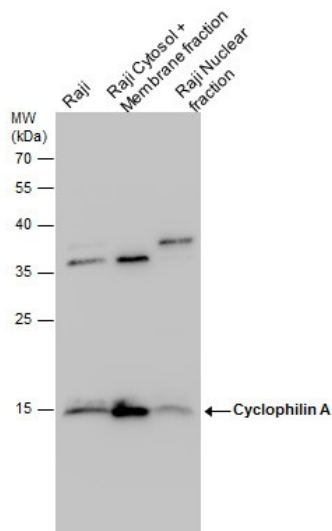
Storage Buffer 1XPBS, 40% Glycerol (pH7). 0.01% Thimerosal was added as a preservative.

Storage Instruction Keep as concentrated solution. Aliquot and store at -20°C or below. Avoid multiple freeze-thaw cycles.

Notes For *In vitro* laboratory use only. Not for any clinical, therapeutic, or diagnostic use in humans or animals. Not for animal or human consumption.

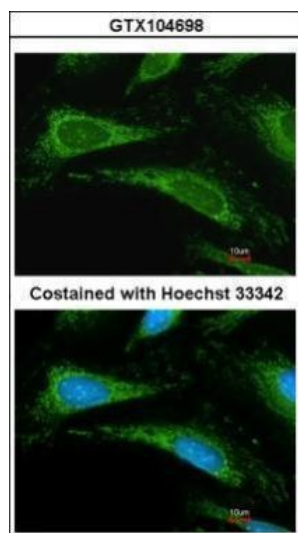
Application Reference

1. Lin CY (2016) *Cell Death Discov* 16065
2. May EW (2014) *Pharmacol Res* 1-17
3. Huang HJ (2014) *Mol Biosyst*
4. Fan CY (2013) *Electrophoresis* 3305-14



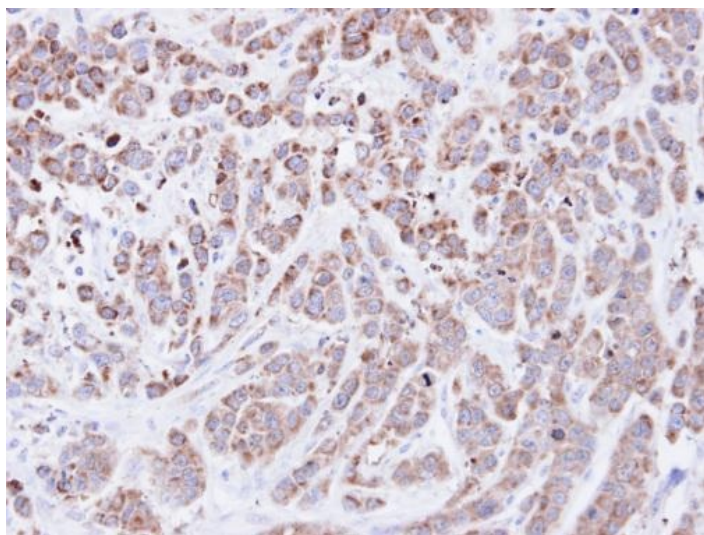
GTX104698 WB Image

Cyclophilin A antibody detects Cyclophilin A protein by western blot analysis. Raji whole cell extracts and cytoplasm+membrane and nuclear extracts (30 µg) were separated by 12% SDS-PAGE, and the membrane was blotted with Cyclophilin A antibody (GTX104698) at a dilution of 1:5000.



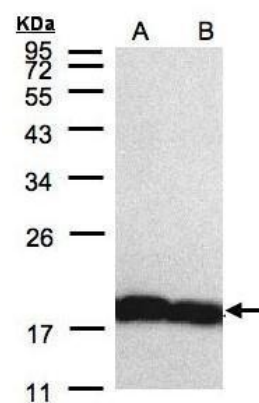
GTX104698 ICC/IF Image

Immunofluorescence analysis of methanol-fixed HeLa, using Cyclophilin A(GTX104698) antibody at 1:200 dilution.



GTX104698 IHC-P Image

Immunohistochemical analysis of paraffin-embedded MDA-MB-468 xenograft, using Cyclophilin A(GTX104698) antibody at 1:500 dilution.



GTX104698 WB Image

Sample(30 µg of whole cell lysate)
 A:H1299
 B:HeLa S3(GTX14654)
 12% SDS PAGE
 GTX104698 diluted at 1:5000